

# Using LDAP Authentication

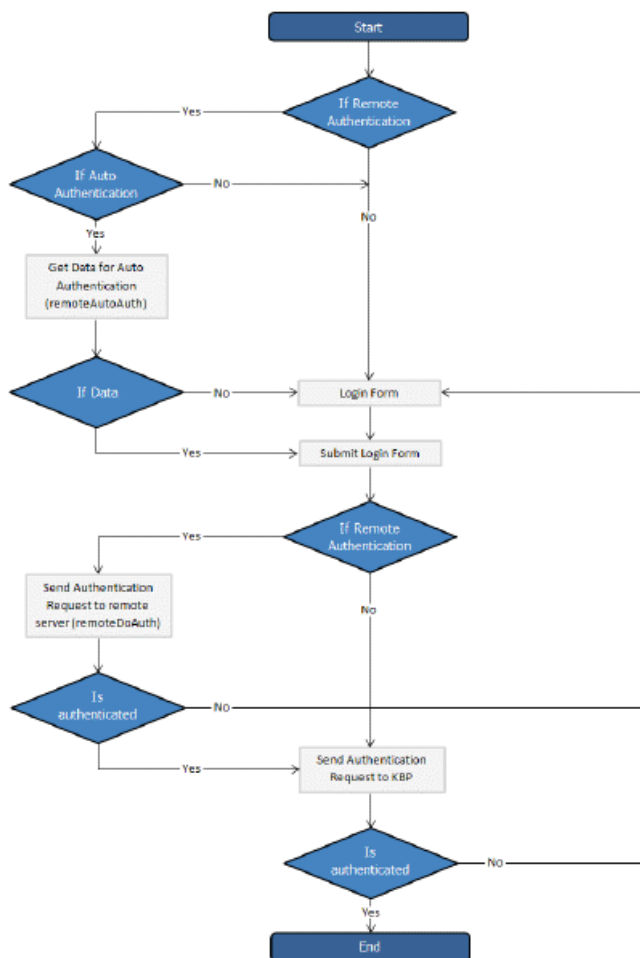
LDAP authentication allows you to integrate your organization's authentication system with KBPublisher. Configuration requires only a few simple steps.

## Steps to enable LDAP Authentication

- See [this article](#) for details

## Quick summary of the process

- End user goes to site
- User fill the login form
- Remote Authentication checks for valid user credentials
- KBPublisher authenticates the user



## Tracking logins

You can see how your remote authentication works in logs Logs/Logins

For debugging every last login is logged to a file called `last_remote_login.log` in the KBPublisher cache directory (`APP_CACHE_DIR` in `admin/config.inc.php`).

For example: `/home/username/ kb_cache/last_remote_login.log`

Article ID: 181

Last updated: 05 May, 2021

Updated by: Leontev E.

Revision: 7

User Manual v7.0 -> Single Sign On -> LDAP Authentication -> Using LDAP Authentication

<https://www.kbpublisher.com/kb/entry/181/>